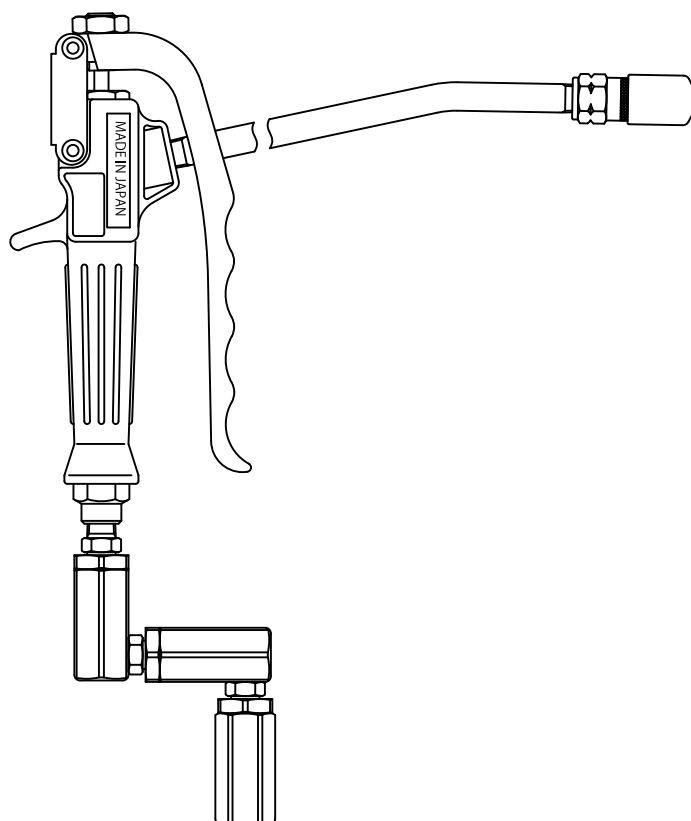


## INSTRUCTION

### HIGH PRESSURE GREASE GUN

HPG-G MODEL No. 851985 / 852164



#### WARNING

Prior to operating this pump, be sure to read this operation manual for safety. After reading the manual, please keep it on hand for future reference.

# YAMADA CORPORATION

## 1. DESCRIPTIONS

This is a high pressure grease gun used for lubrication to vehicle, construction machine and various machines and facilities in the industry of every field.

## 2. OPERATING INSTRUCTIONS

### [PREPARATIONS]

- 1) Securely thread the nozzle into the gun body and adjust a direction of the coupler to be downward. Check if the lever of gun body has a slight play before and behind, and if the lever has no play, adjust it to make a slight play according to the service instructions. (Fig.4)
- 2) Firmly connect the swivel joint with outlet of delivery hose. Use aluminum washer(s) (option 701930) for complete tightness if necessary.

### [OPERATIONS]

Pulling the Lever toward the body will dispense a continuous flow of lubricant from the coupler and by releasing the lever the valve will close to shut lubricant flow off.

- 1) Before lubrication, make sure to clean dirt or dust off from grease fitting on equipment with a clean cloth.
- 2) Snap the coupler straight to the filling and operate the lever of control valve. (Fig.2)
- 3) For easily remove of the coupler from the fitting, slightly slant the coupler to release inside pressure. (Fig.3)

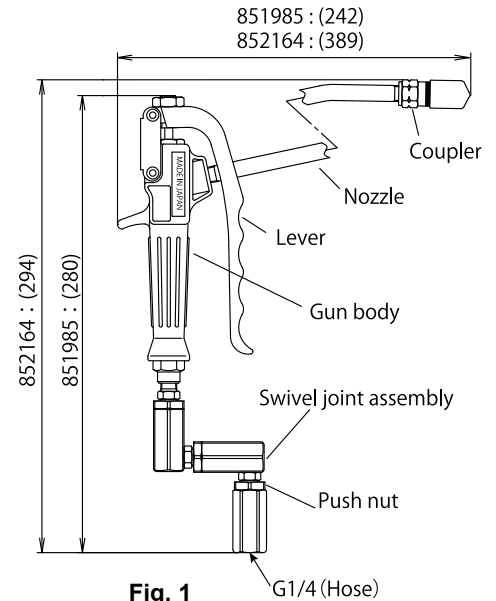


Fig. 1

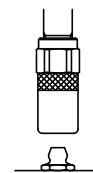


Fig.2

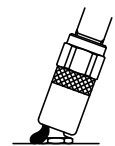


Fig.3

## 3. MAINTENANCE

### [TROUBLE DIAGNOSIS]

The following chart is the summary for probable troubles, causes and possible remedies concerned to these grease guns.

Disassemble and repair only the necessary parts, in judgment from the out-looking troubles.

| Troubles                                                | Causes                                            | Possible Remedies                                                           |
|---------------------------------------------------------|---------------------------------------------------|-----------------------------------------------------------------------------|
| Lubricant leaks from coupler when snap on the fitting.  | Worn or damaged claws, packings, etc. of coupler. | Check them and replace for new ones.                                        |
| Lubricant leaks from retaining nut.                     | Damaged or defaced packings.                      | Tighten retaining nut or replace the packings.                              |
| Lubricant dose not flow when operate lever.             | Clogged coupler of nozzle assembly.               | Blow an obstruction out to clean inside passage.                            |
|                                                         | Clogged nipple of swivel joint.                   | Disassemble swivel joint to clean.                                          |
|                                                         | Damaged rod or much lever's play.                 | Replace rod or adjust each part of bolt, nut, etc. for proper lever's play. |
| Lubricant flows continuously when do not operate lever. | Damaged spring retainer, ball or spring.          | Check them and replace for new ones.                                        |
|                                                         | Tight lever's play.                               | Adjust for proper lever's play.                                             |
| Lubricant leaks from swivel.                            | Worn or defaced orings or back up rings.          | Tighten push nut or replace orings or back up rings.                        |

### [DISASSEMBLY and ASSEMBLY]

- 1) Remove nozzle, bolt and nut from the gun body and raise lever (Fig.4).
- 2) After removed rod, unscrew retaining nut and remove packing and washer.
- 3) Unscrew and remove union (with swivel) of the bottom of the gun body.
- 4) Remove spring, spring retainer and ball from the bottom of the gun body.
- 5) Wash each part with wash oil. If there is ablation or damage, change it to new one.  
※If seal to the grease fitting loosens or a leak occurs, change coupler to new one.
- 6) After the check, assemble by reverse procedure.  
※Install lever so that bolt does not push rod when lever is not pulled.  
※If leak occurs from swivel, tighten push nut first.

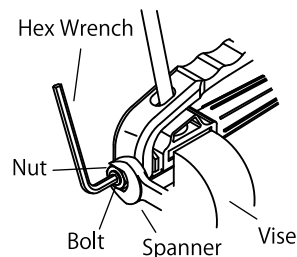
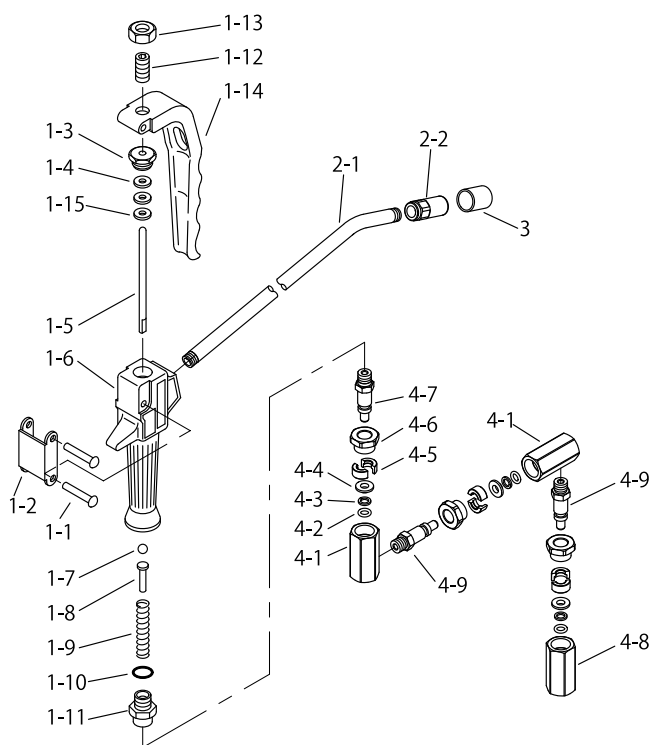


Fig.4

### ■Parts List



| No.  | Part No. |        | Description           | Q'ty |
|------|----------|--------|-----------------------|------|
|      | 851985   | 852164 |                       |      |
| 1    | 802732   | ←      | Gun body assembly     | —    |
| 1-1  | 683201   | ←      | Rivet                 | 2    |
| 1-2  | 711351   | ←      | Link                  | 1    |
| 1-3  | 711444   | ←      | Retaining nut         | 1    |
| 1-4  | 772160   | ←      | Packing               | 2    |
| 1-5  | 711357   | ←      | Rod                   | 1    |
| 1-6  | 711352   | ←      | Body                  | 1    |
| 1-7  | 630314   | ←      | Ball                  | 1    |
| 1-8  | 711445   | ←      | Spring retainer       | 1    |
| 1-9  | 711446   | ←      | Spring                | 1    |
| 1-10 | 640011   | ←      | O ring                | 1    |
| 1-11 | 710971   | ←      | Union                 | 1    |
| 1-12 | 711750   | ←      | Bolt                  | 1    |
| 1-13 | 627641   | ←      | Nut                   | 1    |
| 1-14 | 711354   | ←      | Lever                 | 1    |
| 1-15 | 713638   | ←      | Washer                | 1    |
| 2    | 804911   | 804912 | Nozzle                | —    |
| 2-1  | 716563   | 716564 | Nozzle                | 1    |
| 2-2  | 686446   | ←      | Coupler               | 1    |
| 3    | 685728   | ←      | Cap                   | 1    |
| 4    | 802910   | ←      | Swivel joint assembly | —    |
| 4-1  | 711729   | ←      | Housing B             | 2    |
| 4-2  | 640003   | ←      | O ring                | 3    |
| 4-3  | 682988   | ←      | Back up ring          | 3    |
| 4-4  | 711730   | ←      | Retainer              | 3    |
| 4-5  | 580300   | ←      | Packing retainer      | 6    |
| 4-6  | 711731   | ←      | Push nut              | 3    |
| 4-7  | 712212   | ←      | Nipple                | 1    |
| 4-8  | 711728   | ←      | Housing A             | 1    |
| 4-9  | 711732   | ←      | Nipple                | 2    |

## 4. LIMITED WARRANTY

- 1) Warranty period:  
This warranty will be valid for a period of 12 months after the date of purchase.
- 2) Warranty:  
If, during the warranty period, any of the material of the genuine parts of this product or the workmanship of this product is found defective, and is so verified by our company, the servicing cost will be fully born by our company.  
This limited warranty only applies to the high pressure grease gun.

Manufactured by

**YAMADA CORPORATION**

INTERNATIONAL DEPARTMENT

1-1-3 Minami Magome, Ohta-ku, Tokyo 143-8504, Japan

PHONE : +81-(0)3-3777-0241

FAX : +81-(0)3-3777-0584