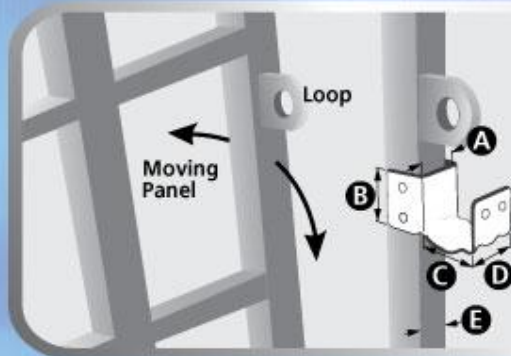


## LOCK HOLDER DIMENSIONS



Art. 320/N

**A** 26.5mm

**B** 33mm

**C** 30mm

**D** 32mm

**E** 21-25mm

Art. 320/O

**A** 13.5mm

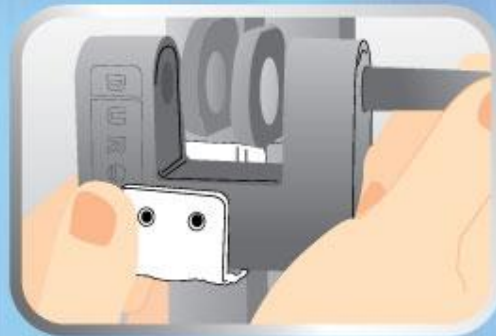
**B** 33mm

**C** 30mm

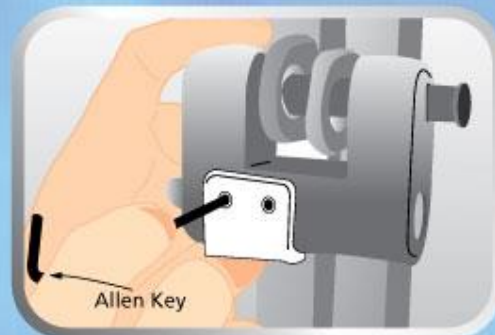
**D** 19mm

**E** 9.5-13.5mm

## INSTALLATION INSTRUCTIONS



1. Place the Padlock on the Lock Holder and hold it onto your gate (non-moving panel). Slide in the locking bar to determine the position.



2. Secure the Padlock by tightening the 2 screws on the Lock Holder with Allen Key.



3. Secure the Lock Holder onto the gate by tightening the remaining 4 screws.



4. Do not use excessive force to tighten all screws.