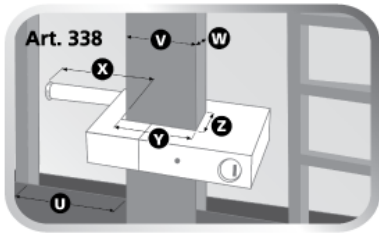


Please measure and ensure your gate measurements are suitable for the lock. Kindly pay extra attention to **U**.

ONE HAND CONVENIENCE OPERATION

You can now lock and unlock your Art.338 with one hand as the lock is fixed onto the gate when you open or close.



- U** ≥90.0mm
- X** 89.0mm
- V** ≤61.0mm
- Y** 61.0mm
- W** ≤34.0mm
- Z** 34.0mm

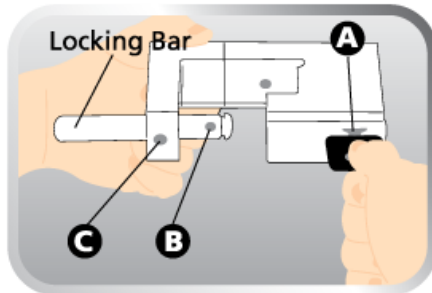
Lock and Gate Dimensions

• **X** is 89mm, **U** must be 90mm or more to allow the locking bar to pass through non-moving panel when opening and closing gate.

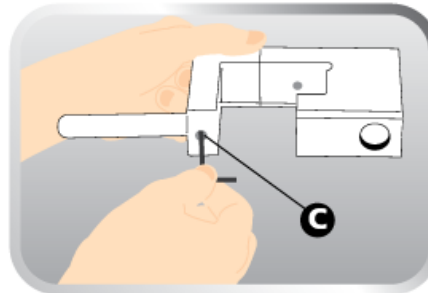
• **Y** is 61mm. When gate is closed, width of gate panels **V** together must be EQUAL or LESS than 61mm.

• **Z** is 34mm, gate thickness **W** must be EQUAL or LESS than 34mm.

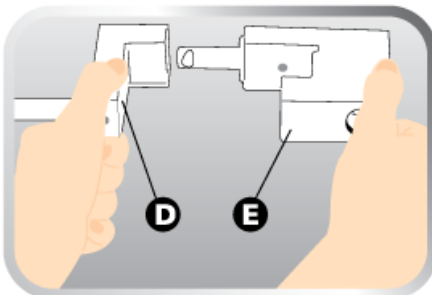
INSTALLATION INSTRUCTIONS



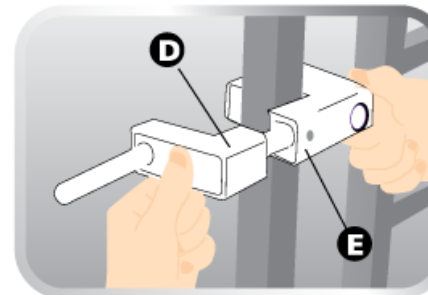
1. Insert Key into keyhole **A**. Turn Key clockwise to release the locking bar.



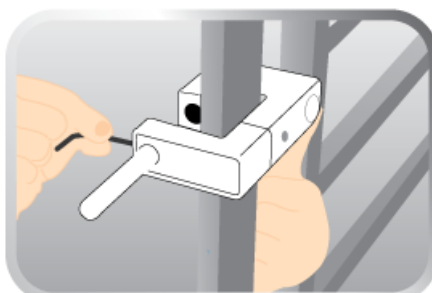
2. Align hole **B** with hole **C**. Insert Allen Key and turn anti-clockwise to loosen internal locking screw.



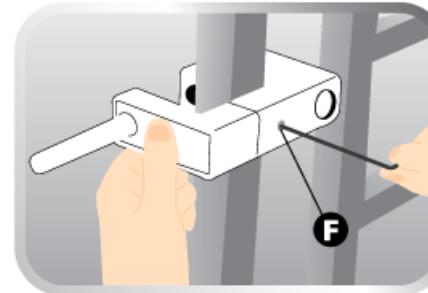
3. Pull side body **D** and main body **E** apart.



4. Standing outside with your gate opened, join **D** and **E** with the locking bar facing inside of your house.



5. Align hole **B** with hole **C**, tighten internal locking screw in clockwise direction with Allen Key.



6. From outside of the gate, position your lock to desired height and secure it by tightening the locking screw in hole **F**.