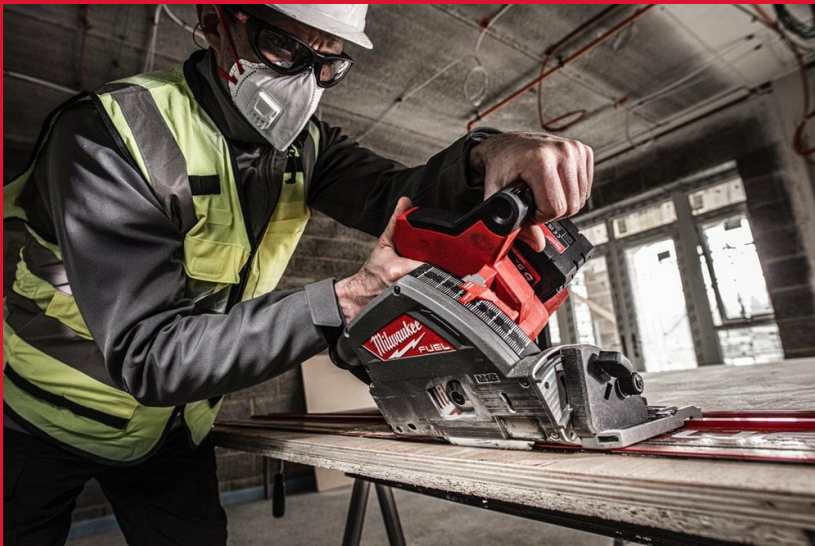


M18 FPS55-OP

M18 FUEL™ 55 MM PLUNGE SAW

- The M18 FUEL™ plunge saw delivers the power to rip cut at the same feed rate of an equivalent AC circular saw - with the ability to cut 45 metres of 18 mm plywood on one 5.5 Ah battery charge
- The depth adjustment has two scales, one for on the rail and one for off the rail, this can easily be adjusted by the press of a button
- Flat sided upper guard, the blade is only 12 mm from the outer edge of the guard allowing the saw to cut very close to a wall
- This saw has also been designed for optimal dust extraction on the job site, due to the enclosed guard. It is compatible with the DEK26 system and is also supplied with a dust bag
- Scoring stop allows a 1 mm back cut to made minimising any splintering in laminated materials
- The bevel adjustment has stops at 22.5°, 45° and 48°. It also has a -1 for making a back cut
- The saw also has a cut line window on the side for those cuts where you need to see the front of the blade against the material and also a sprung loaded riving knife
- Easy blade change system locks the switch off and the blade in position while the blade can be changed
- Retractable riving knife allows the riving knife to stay in position even when making plunge cuts
- Variable speed from 2500 rpm to 5600 rpm
- Flexible battery system: works with all MILWAUKEE® M18™ batteries



REDLITHIUM™

No load speed (rpm)	2500 - 5600
Max. cutting depth 0°/45°/48° (mm)	59/ 44
Max. cutting depth with guiderail 0°/45°/48° (mm)	55/ 42
Blade diameter (mm)	165
Weight with battery pack (EPTA) (kg)	4.9 (M18 HB5.5)
Kit included	No batteries supplied, No charger supplied, PACKOUT™ XL tool box
Article Number	4933478777

