



M12 FIWF12

SERVICE PARTS DIAGRAM

TTI Model Number: 018 312 019, 020, 023, 024, 040

M12™ FUEL 1/2" STUBBY IMPACT WRENCH

Bulletin Date:

Dec-20

Starting Serial Number:

VERSION A - K2018

00 0

EXAMPLE:

Component Parts (Small #)
Are Included When Ordering
The Assembly (Large #).

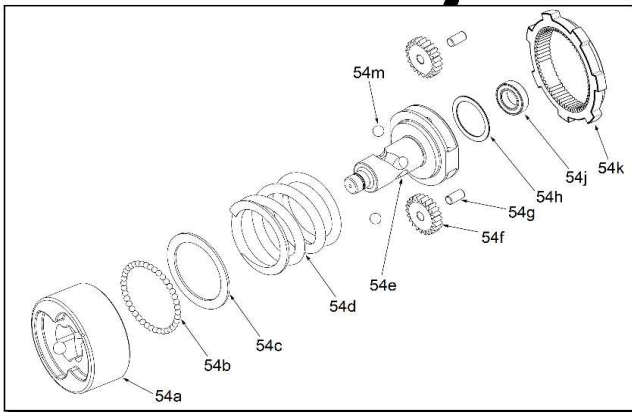
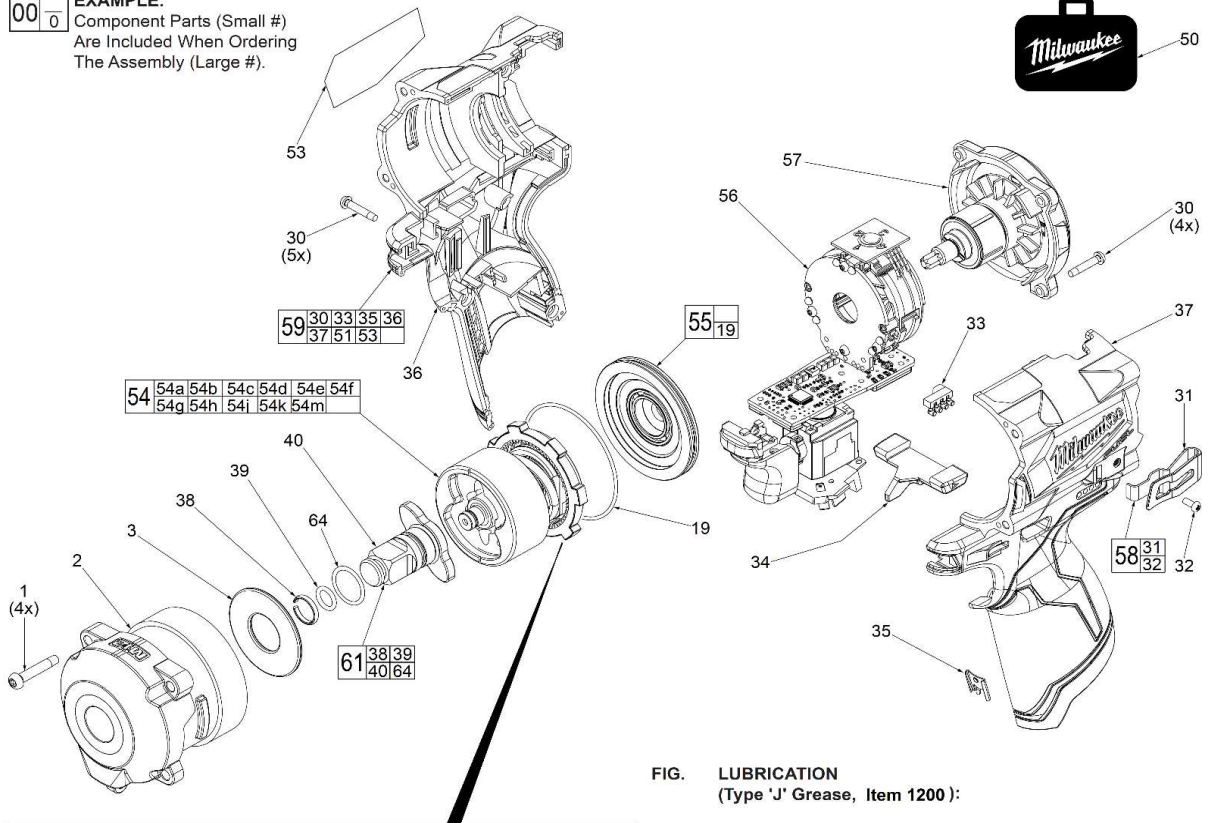


FIG. LUBRICATION
(Type 'J' Grease, Item 1200):

When servicing, remove 90-95% of the existing grease prior to installing Type 'J'. Original grease maybe similar in color but not compatible with 'J'.

- 2 Coat anvil opening in the front of the gear case with grease.
- 3 Coat gear case washer with grease.
- 40 Lightly coat round shaft surface of anvil with grease. Place a dab of grease in cavity at rear of anvil.
- 54 Lightly coat the inside gear teeth of ring gear and the gear teeth of the planet gears of impacting assembly with grease.
- 57 Coat pinion of rotor/back cap assembly with grease.

SCREW TORQUE SPECIFICATIONS

FIG.	PART NO.	WHERE USED	SEAT TORQUE	
			(KG/CM)	(N/m)
1	660024024	Front Gear Case	14-17	1.36-1.58
30	662456001	Rotor/Back Cap	6-8	0.57-0.68
30	662456001	Right Housing-Cover	9-11	0.79-1.02
32	661703002	Belt Clip	5-9	0.45-0.79



M12 FIWF12

SERVICE PARTS LIST

TTI Model Number: 018 312 019, 020, 023, 024, 040

M12™ FUEL 1/2" STUBBY IMPACT WRENCH

Bulletin Date:

Dec-20

Starting Serial Number:

VERSION A - K2018

ITEM	PART NUMBER	PART DESCRIPTION	QTY (PCS)
1	660024024	M4 X 22MM SCREW	4
2	313197001	1/2" GEAR CASE	1
3	534246002	WASHER	1
19	564411003	O-RING	1
30	662456001	M3 X 16MM SCREW	9
31	639391001	BELT CLIP	1
32	661703002	M2.5 X 6MM SCREW	1
33	534253001	LIGHT PIPE	1
34	534251001	FORWARD/REVERSE SHUTTLE	1
35	631542003	HOUSING CLIP	1
36	-	RIGHT HOUSING HALVE - COVER	1
37	-	LEFT HOUSING HALVE - SUPPORT	1
38	691983001	1/2" FRICTION RING	1
39	570698001	O-RING	1
40	621352214	1/2" ANVIL	1
50	313042003	ZIPPERED CANVAS TOOL BAG	1
51	941312023	WARNING LABEL 018312019 ASIA, 020 KR, 023 TW, 024 AZN VERSION	1
51	941312042	WARNING LABEL 018312040 ONLY JP VERSION	1
53	941122393	SERVICE NAMEPLATE (NEW) 018312019 ASIA, 020 KR, 023 TW, 024 AZN VERSION	1
53	940946920	SERVICE NAMEPLATE (OLD) 018312019 ASIA, 020 KR, 023 TW, 024 AZN VERSION	1
53	941050568	SERVICE NAMEPLATE 018312040 ONLY JP VERSION	1
54	208381001	IMPACTING ASSEMBLY	1
54a	693116058	HAMMER	1
54b	670221001	3.0MM STEEL BALL	31
54c	680335109	WASHER	1
54d	693164057	SPRING	1
54e	621338051	CAM SHAFT	1
54f	611575027	PLANET GEAR	2
54g	671565018	PLANET GEAR PIN	2
54h	690426002	WASHER	1
54j	681949004	BALL BEARING	1
54k	611574030	RING GEAR	1
54m	680015001	3/16" STEEL BALL	2
55	204910001	END CAP ASSEMBLY	1
56	208382001	ELECTRONICS ASSEMBLY	1



M12 FIWF12

SERVICE PARTS LIST

TTI Model Number: 018 312 019, 020, 023, 024, 040

M12™ FUEL 1/2" STUBBY IMPACT WRENCH

Bulletin Date:

Dec-20

Starting Serial Number:

VERSION A - K2018

ITEM	PART NUMBER	PART DESCRIPTION	QTY (PCS)
57	208383001	ROTOR/BACK CAP ASSEMBLY <i>018312019 ASIA, 020 KR, 023 TW, 024 AZN VERSION</i>	1
57	208383003	ROTOR/BACK CAP ASSEMBLY <i>018312040 ONLY JP VERSION</i>	1
58	204518001	BELT CLIP ASSEMBLY	1
59	204911004	HOUSING ASSEMBLY <i>018312019 ASIA, 020 KR, 023 TW, 024 AZN VERSION</i>	1
59	204911015	HOUSING ASSEMBLY <i>018312040 ONLY JP VERSION</i>	1
61	204913001	1/2" FRICTION RING ANVIL ASSEMBLY	1
64	562749001	O-RING	1
1200	-	TYPE J GREASE	1



M12 FIWF12

SERVICE INSTRUCTION

TTI Model Number: 018 312 019, 020, 023, 024, 040

M12™ FUEL ½" STUBBY IMPACT WRENCH

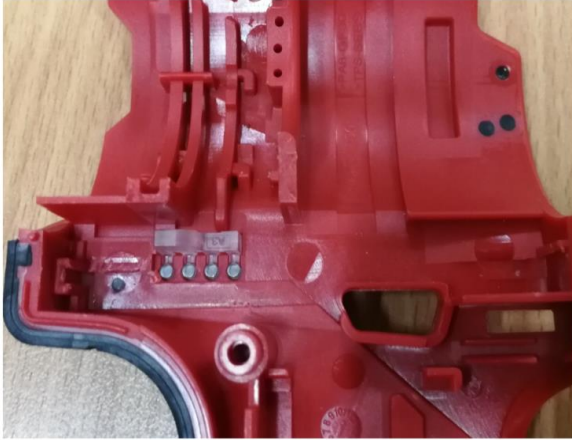
Bulletin Date:

Dec-20

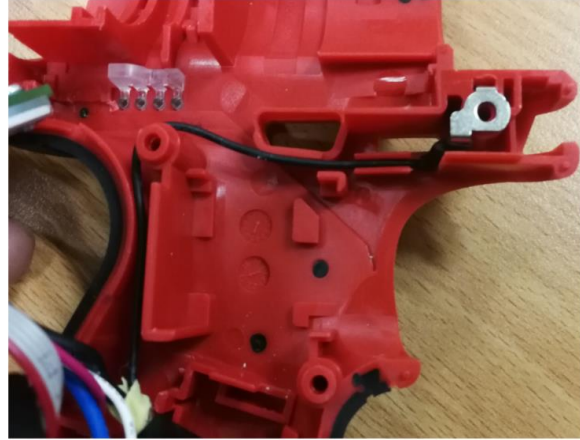
Starting Serial Number:

VERSION A - K2018

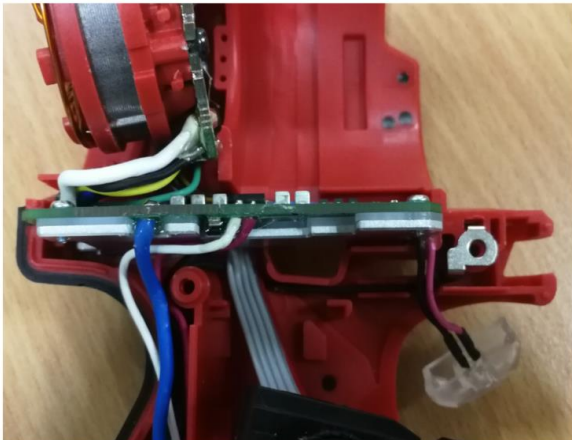
WIRING INSTRUCTIONS- one of two



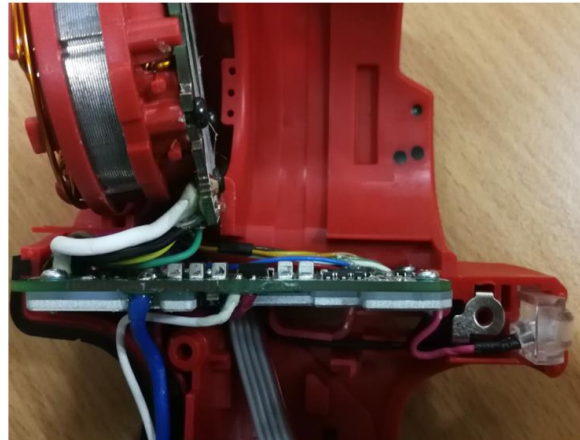
STEP 1: Insert light pipe in cavity of left housing half-support.



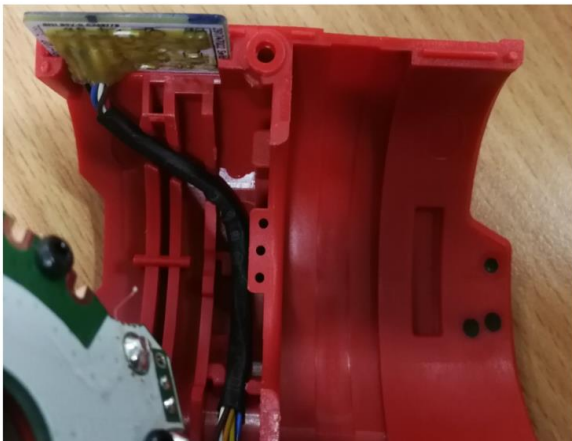
STEP 2: Assemble HV terminal over screw boss and route HV terminal wire through channels and traps as shown.



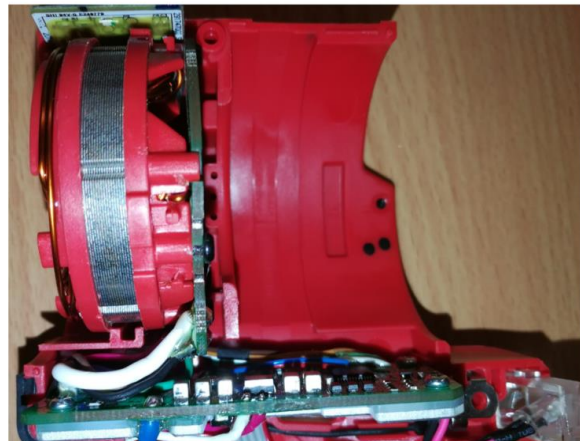
STEP 3: Assemble PCBA into corresponding housing cavity as shown.



STEP 4: Install LED lens and tuck LED wires down in housing cavity, over HV terminal wire.



STEP 5: Install the pop switch into housing half as shown. Route wires through traps being sure wires are tucked completely down.



STEP 6: Assemble stator over pop switch wires. Be sure stator is seated firmly and squarely in housing half.



M12 FIWF12

SERVICE INSTRUCTION

TTI Model Number: 018 312 019, 020, 023, 024, 040

M12™ FUEL ½" STUBBY IMPACT WRENCH

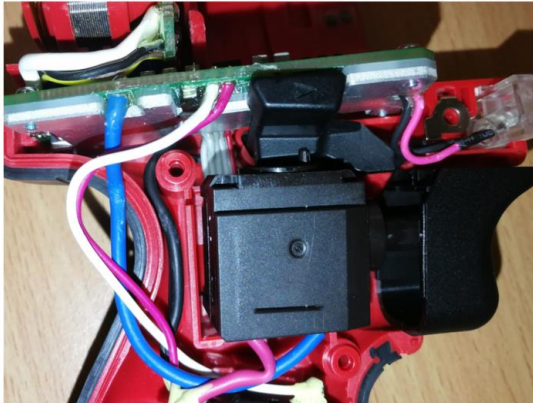
Bulletin Date:

Dec-20

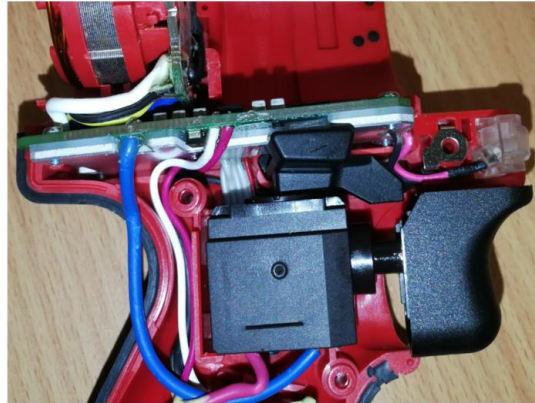
Starting Serial Number:

VERSION A - K2018

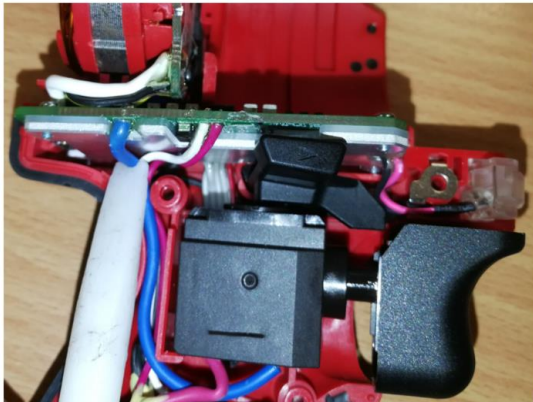
WIRING INSTRUCTIONS- two of two



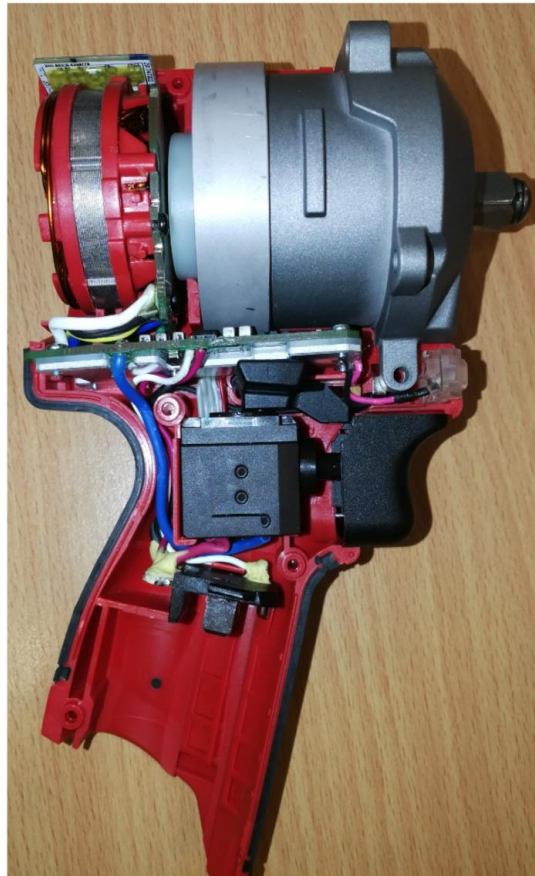
STEP 7: Install forward/reverse shuttle and on-off switch into left housing half-support. Be sure shuttle is properly seated over the forward/reverse tab on top of on-off switch.



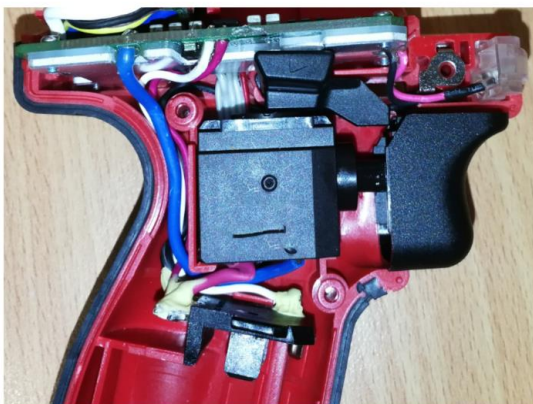
STEP 8: Route the PCBA wires connected with battery terminal into the wire channel of left housing as shown.



STEP 9: Use a plastic/nylon instrument to carefully press blue wire into housing cavity, over the battery terminal wires.



STEP 11: Assemble the gear case assembly onto the left housing half and secure with two gear case screws.



STEP 10: Install battery terminal block into the housing half being sure that it is firmly and squarely seated in the cavity.

Check that all elements of electronics assembly are seated properly and that all wires are pressed completely down in wire traps and channels.

Carefully install right housing half-cover onto left housing half-support. Secure with five housing half screws and the two remaining gear case screws. Install rotor back cap assembly and secure with four screws.

Check functionality of shuttle and on-off switch before installing battery.