



Cordless Cleaner CL117FD



2.0Ah built-in type
Li-Ion battery



Run time
55 min
[Normal mode]

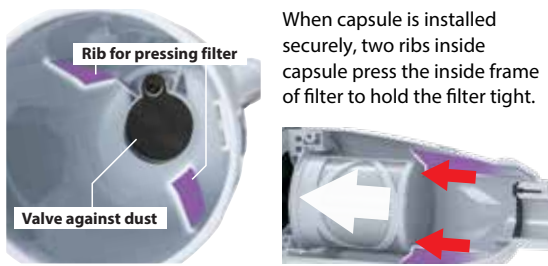
Charging time
2.0 h

Max Sealed Suction
5.0 kPa

Max Air Flow
1.0 m³/min

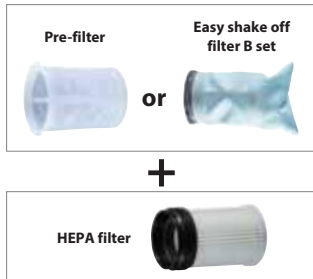
12Vmax / 2.0Ah built-in type Li-Ion battery

Improved dust-resistance

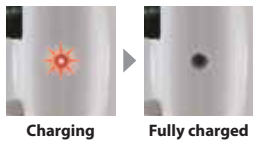


HEPA filter is available

HEPA filter

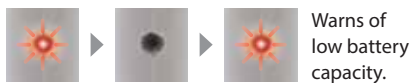


Dual-function indicator lamp



Indicates that the battery is being charged.

Charging time
About
2.0 h



One-touch push button switch



3 Speed mode

- 2: High speed mode
- 3: Max speed mode
- 1: Normal speed mode

Single LED job light



Pipe locking mechanism



Pipe with beveled end



Nozzle for flooring & carpet



Hair removing brush



Hair removing brush scrapes out and vacuums up hair/debris on carpet. Also available for wood floor.

Accessories

Floor/carpet t-nozzle

Part No. 198525-7



Floor t-nozzle

Part No. 123486-2



Nozzle assembly set

Part No. 191X06-4



Round brush set

Part No. 198878-4



Shelf brush set

Part No. 198873-4



Sash nozzle

Part No. 451240-7



Long sash nozzle set

Part No. 198919-6



Crevice nozzle 415 set

Part No. 199439-3



Pipe

Part No. 459353-8



Flexible hose set

Part No. 191E30-3



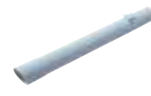
Flexible hose set

Part No. 198867-9



Straight pipe set 340

Part No. 191D76-3



Sash nozzle holder

Part No. 451242-3



Nozzle holder

Part No. 459354-6



Filter set

10pcs /set

Part No. 443060-3



Pre-filter

Part No. 421208-3



Easy shake off filter B set

Part No. 199966-0



Filter H set

Part No. 199989-8

HEPA filter



Cyclone attachment set with pipe lock

Part No. 191D71-3



Holder set

Part No. 199971-7



Cordless Cleaner

CL117FD

Electronic 3-Speed

Built-in Job Light

Capacity	650 mL
Continuous Use (min.)	Powerful / High / Normal: 10 / 18 / 55
Max air flow	1.0 m ³ /min
Max sealed suction	5.0 kPa (510 mmH ₂ O)
Suction Power	Powerful / High / Normal: 29 / 15 / 3
Dimensions (L x W x H)	w/o Pipe & Nozzle: 457 x 110 x 136 mm (18 x 4-5/16 x 5-3/8")
	w/ Pipe & Nozzle: 992 x 110 x 136 mm (39 x 4-5/16 x 5-3/8")
Net weight	1.0 kg (2.2 lbs.)

Standard Equipment : Floor nozzle, Sash nozzle, Sash nozzle holder, Pipe, Charger

Not covered by EPTA-Procedure

Items of standard equipment and specifications may vary by country or area.

Makita Singapore Pte Ltd

7, Changi South Street 3, Singapore 486348
Phone : +65-6546-8700 Fax : +65-6546-8711
Email : msgproductteam@makita.com.sg
Website : www.makita.com.sg
Facebook : www.facebook.com/MakitaSG



f MakitaSG



VISIT OUR WEBSITE



DOWNLOAD LEAFLET

PRINTED IN SINGAPORE