

# SAFETY SHOWERS AND EYEWASH EQUIPMENT

## PREMIUM RANGE

Item Code	Description
H-EXP18GS85G	Indoor Emergency Combination Safety Shower with Eye/ Face Wash

Floor mounted emergency safety shower with eye/face wash unit in Marine 316 Stainless Steel. This ANSI compliant Combination Shower and Eye/face wash is ideal for use in indoor applications not subject to high ambient operating temperatures.

The Stocked Model is Versatile and allows for Top or Mid-Level water Inlet at 1-1/4 BSP Female.

Please see page 42-43 for **optional** accessories



Item Code	Description
H-EXPSD18GS85G	Outdoor Self-Draining Emergency Combination Safety Shower with Eye/ Face Wash

Floor mounted Self-draining emergency safety shower with eye/face wash unit in Marine 316 Stainless Steel. The design allows standing water to drain away from the standpipe to ensure the delivery of tepid (16-36c) water. The valve is situated directly above the water inlet; the bleed pipe is fitted above this so standing water can drain into the ground preventing stagnant water overheating from solar radiation and water contamination, thus removing the risk of further injury to the operator. Outdoor applications subject up to 45 degrees ambient temperatures in direct sunlight.

The stocked model's bottom water Inlet at 1-1/4 BSP Female.

Please see page 42-43 for **optional** accessories



# ACCESSORIES FOR PREMIUM RANGE OF SAFETY SHOWERS AND EYEWASH EQUIPMENT

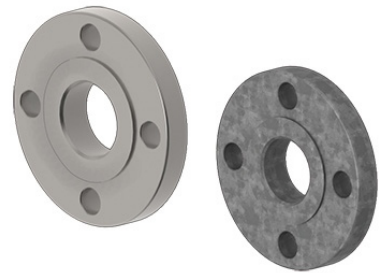
## PREMIUM RANGE ACCESSORIES

### ACCESSORIES AND EYEWASH EQUIPMENT

Item Code	Description
H-TFC	G RANGE FOOT TREADLE FOR INDOOR PREMIUM EYEWASH
H-KTFC	K RANGE FOOT TREADLE FOR SELF-DRAINING EYEWASH



Item Code	Description
H-SD05010	1 INCH 316L/GALV ANSI/ASME/PN 150LB RAISED/FLAT FACE FLANGE AT WATER INLET/OUTLET
H-SD05030	1-1/4 INCH 316L/GALV ANSI/ASME 150LB RAISED/FLAT FACE FLANGE AT WATER INLET/OUTLET
H-SD05040	1-1/2 INCH 316L/GALV ANSI/ASME 150LB RAISED/FLAT FACE FLANGE AT WATER INLET/OUTLET
H-SD05050	2 INCH 316L/GALV ANSI/ASME 150LB RAISED/FLAT FACE FLANGE AT WATER INLET/OUTLET



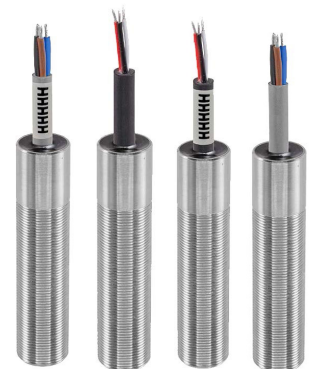
Other Sizes are available on request

Item Code	Description
H-VL60001	1/2 INCH NPTF 316 STAINLESS STEEL FTEK SCALD PROTECTION VALVE 1/2SP316-95S - VALVE FULLY OPEN AT 38 DEG C, FULLY CLOSED AT 32.2 DEG C
H-VL60013	1/2" NPTF 316 STAINLESS STEEL, FTEK SCALD PROTECTION VALVE 1/2SP316-11 - VALVE FULLY OPEN AT 37.7 DEG.C' FULLY CLOSED AT 29 DEG.C



Other sizes and Temperature parameters available on request

Item Code	Description
H-EC35147	1-1/4 Inch Bsp Euroswitch 316 Stainless Steel With Terminal Box With M20 Cable Entry, Spdt With 1 Nc & 1No Volt-Free Contacts
H-STD22KS - SS316	Low Inrush Proximity Switch, 24VDC, Suitable For Zone Suitable For Non-Flameproof Areas
H-STD22KS(2ND) - SS316	Low Inrush 2nd Proximity Switch, 24VDC Complete With Brackets Suitable For Non-Flameproof Areas
H-STD22KSZ12 - SS316	Low Inrush Proximity Switch, 24VDC, Suitable For Zone 1 & 2 Areas Gas Groups 11a And 11b
H-STD22KS(2ND) Z12 -SS316	Low Inrush 2nd Proximity Switch, 24VDC Complete With Brackets. Suitable For Zone 1 & 2 Areas Gas Groups 11a And 11b
H-STD22K	Brass Nickel Plated Low Inrush Proximity Switch, 24VDC, Suitable For Zone Suitable For Non-Flameproof Areas
H-STD22K(2ND)	Brass Nickel Plated Low Inrush 2nd Proximity Switch, 24VDC Complete With Brackets Suitable For Non-Flameproof Areas
H-STD22KZ12	Brass Nickel Plated Low Inrush Proximity Switch, 24VDC, Suitable For Zone 1 & 2 Areas Gas Groups 11a And 11b
H-STD22K(2ND)Z12	Brass Nickel Plated Low Inrush 2nd Proximity Switch, 24VDC Complete With Brackets Suitable For Zone 1 & 2 Areas Gas Groups 11a And 11b



Other Configurations are available on request