

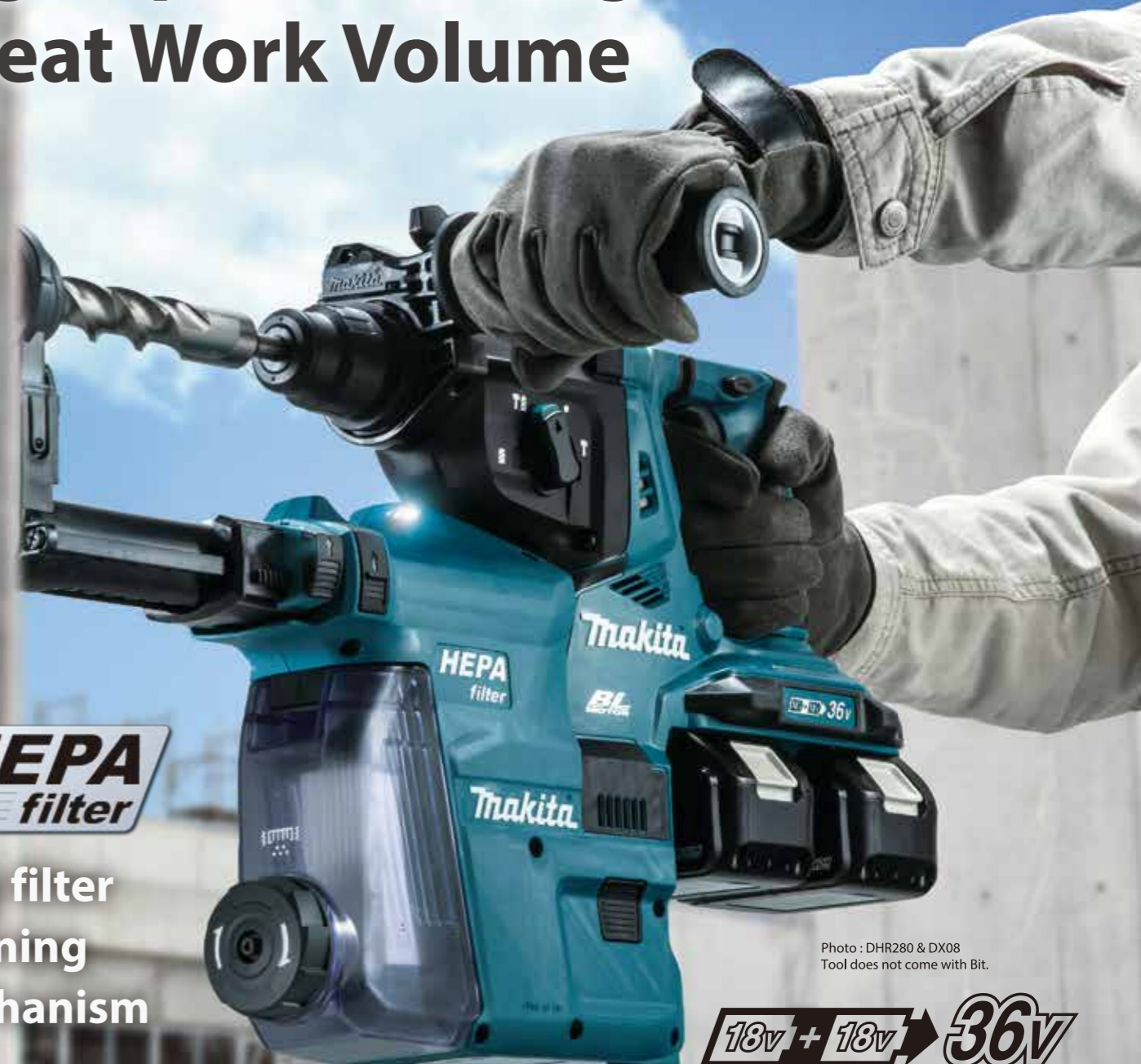


Cordless Combination Hammer
DHR280 / DHR281 / DHR282 *AWS*
DHR283 *AWS* 28 mm (1-1/8")



Adapted for
SDS-PLUS bits

High Speed Drilling and Great Work Volume



with filter cleaning mechanism

Photo: DHR280 & DX08
Tool does not come with Bit.

18V + 18V → 36V

DHR280

DHR282 *AWS*



DX08 ▶
(199579-7)

DHR281

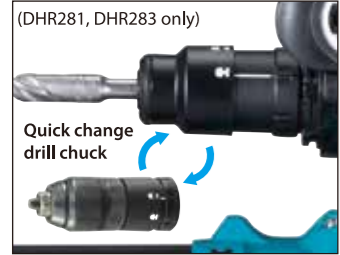
DHR283 *AWS*



Quick change drill chuck

DX09 ▶
(199583-6)

Quick change chuck Type



(DHR281, DHR283 only)

Quick change drill chuck

Depth gauge

can be adjusted for desired drilling depth simply by pushing single push button

Twin LED job light



Dust collection inlet

can be adjusted according to bit length simply by pushing single push button

Large dust box cover

can be opened simply by pushing single push button for easy dust cleaning.

Filter cleaning mechanism

Accessories

Dust extraction system set

DX08
(199579-7) for DHR280, DHR282



Dust case

Part No. 199555-1



HEPA Filter

High Efficiency Particulate Air filter is widely regarded as ultimate filter that traps all sizes of particles with an efficiency rating of 99.75%.



Part No. 199557-7



Dust cup

DHR280, DHR282 Part No. 195173-3

DHR281, DHR283 Part No. 195179-1



Cordless Combination Hammer DHR280 / DHR281 / DHR282 / DHR283

- Variable Speed
- Built-in Job Light
- Brake
- Carrying Case
- Reversing
- SDS-PLUS Shank
- Torque Limiter
- Constant Speed
- Dust Collection

	DHR280 / DHR282	DHR281 / DHR283
Impact Energy Capacity	EPTA-Procedure 05/2009: 2.8 J Concrete / Steel / Wood / Core Bit / Diamond Core Bit (Dry Type): 28 / 13 / 32 / 54 / 65 mm (1-1/8" / 1/2" / 1-1/4" / 2-1/8" / 2-9/16")	EPTA-Procedure 05/2009: 2.8 J Concrete / Steel / Wood / Core Bit / Diamond Core Bit (Dry Type): 28 / 13 / 32 / 54 / 65 mm (1-1/8" / 1/2" / 1-1/4" / 2-1/8" / 2-9/16")
Blows Per Minute (BPM)	0 - 5,000	0 - 5,000
No Load Speed (RPM)	0 - 980	0 - 980
Chuck capacity	1.5 - 13 mm (1/16 - 1/2")	1.5 - 13 mm (1/16 - 1/2")
Vibration Level	Hammer Drilling into Concrete: 9.0 m/s ² Drilling Into Metal: 2.5 m/s ²	Hammer Drilling into Concrete: 9.5 m/s ² Drilling Into Metal: 2.5 m/s ²
Sound Pressure Level	93 dB(A)	92 dB(A)
Sound Power Level	104 dB(A)	103 dB(A)
Dimensions (L x W x H)	373x134x232 mm (14-3/4"x5-1/4"x9-1/8")	404x134x232 mm (15-7/8"x5-1/4"x9-1/8")
Net weight	DHR280: 3.9 - 4.9 kg (8.6 - 10.8 lbs.) DHR282: 3.9 - 5.0 kg (8.6 - 11.0 lbs.)	DHR281: 4.0 - 5.1 kg (8.8 - 11.2 lbs.) DHR283: 4.1 - 5.1 kg (9.0 - 11.2 lbs.)

Standard Equipment:
 DHR280, DHR282: Side Grip, Depth Gauge, Battery, Charger, Dust Cup (country-specific), Cleaning cloth (country-specific), Bit Grease (country-specific)
 DHR281, DHR283: Quick Change Drill Chuck, Side Grip, Depth Gauge, Battery, Charger, Dust Cup (country-specific), Cleaning cloth (country-specific), Bit Grease (country-specific)

The weight may differ depending on the attachment(s), including the battery cartridge. The lightest and heaviest combination, according to EPTA-Procedure 01/2014, are shown in the table. Items of standard equipment and specifications may vary by country or area.

Makita Singapore Pte Ltd

7, Changi South Street 3, Singapore 486348
 Phone: +65-6546-8700 Fax: +65-6546-8711
 Email: msgproductteam@makita.com.sg
 Website: www.makita.com.sg
 Facebook: www.facebook.com/MakitaSG



VISIT OUR WEBSITE

PRINTED IN SINGAPORE



(DHR282, DHR283 only)

Excellent Power and Low Vibration

28 mm Cordless Combination Hammer

Max Bit length : 260mm



Filter cleaning mechanism by turning the dial, the dust falls off from the filter



Twin LED job light

Speed dial

Drilling Work Amount
Diameter : Ø12.5mm(1/2")
About **140 pcs.**
(Battery : BL1850B x2)



Photo : DHR280 & DX08

18v + 18v → 36v XPT

BL MOTOR Brushless Motor

Work Speed

About **40%UP** Predecessor Model

Work Volume

About **65%UP** Predecessor Model



Concrete with compressive strength of 40N/mm²
Diameter : Ø12.5mm(1/2"), depth of 60mm(2-3/8")

AVT Anti Vibration Technology

Less Vibration

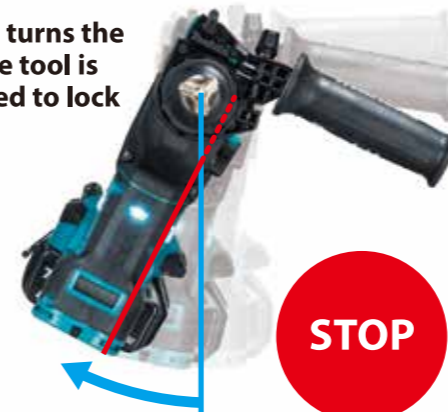
Vibration level
[Chiselling] 8.0m/s² / [Drilling (into metal)] 2.5m/s² **9.0m/s²** [Hammer drilling (into concrete)]



AFT Active Feedback sensing Technology

DHR282, DHR283 only

Torque limiter turns the motor off if the tool is suddenly forced to lock



AWS

Auto - start Wireless System DHR282, DHR283 only



Switch on the tool



Vacuum cleaner is activated

Bluetooth

Accessories

Wireless Unit 199393-1



Features and benefits

	DHR280	DHR281	DHR282	DHR283
Quick change drill chuck		✓		✓
AFT			✓	✓
AWS			✓	✓
AVT	✓	✓	✓	✓
Dust extraction system set	DX08	DX09	DX08	DX09