



Cordless Dustless Cutter DCC500 125 mm (5")



Cuts up to 40 mm with 125 mm wheel



**DRY
CUTTING**

**WET
CUTTING**



**Rotation
speed 8,800min⁻¹**



BL motor provides high power and excellent cutting performance

BL
MOTOR

Cordless Dustless Cutter DCC500

Powered by 18V LXT Li-Ion battery



Single LED job light with afterglow function.



Bevel cut up to 45 degrees enables bevel cutting of bricks.



Auto-start Wireless System



AWS

Automatic speed control

ADT

eXtreme Protection Technology

XPT



360° rotatable dust collecting port

Water supply attachment with a tank capacity of 500mL

Work amount Battery: BL1850B on a single full charge

Cut 600mm groove in bricks at the depth of 10mm

DCC500: about 16m (Dry type 125mm Diamond wheel)

Cut off ceramic tiles with 600mm length and 9.5mm thickness about **25m** (Wet type 105mm Diamond wheel)

Accessories

Dust bag assembly
Part No. 126738-0



Base cover set
Part No. 196943-3



Water supply cover set A
Part No. 191M48-2



Water supply hose



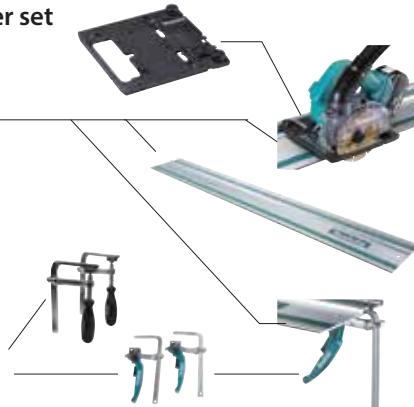
Guide rail adapter set
Part No. 198673-2

Guide rail

length	Part No.
1.0m	199140-0
1.4m	194368-5
1.5m	199141-8
1.9m	194925-9
3.0m	194367-7

Clamp set

Type	Part No.
Standard	194385-5
Quick	199826-6



Cordless Dustless Cutter DCC500 125 mm (5")

- Brake
- Soft Start
- Bevel Cutting 45 left
- Dust Collection
- Built-in Job Light
- Carrying Case

Blade Diameter	125 mm (5")
Hole Diameter	20 mm (13/16")
Max Cutting Capacity	90°: 40.0 mm (1-9/16") 45°: 27 mm
No Load Speed (RPM)	8,800
Vibration Level	Concrete Cutting: 4.0 m/s ²
Sound Pressure Level	96 dB(A)
Sound Power Level	107 dB(A)
Dimensions (L x W x H)	BL1830B / BL1850B / BL1860B: w/ 283 x 158 x 172 mm (11-1/8 x 6-1/4 x 6-3/4")
Net weight	2.6 - 3.1 kg (5.7 - 6.8 lbs.)

Standard Equipment :

DCC500: Diamond Wheel, Dust Bag, Hex Wrench

The weight may differ depending on the attachment(s), including the battery cartridge. The lightest and heaviest combination, according to EPTA-Procedure 01/2014, are shown in the table. Items of standard equipment and specifications may vary by country or area.

Makita Singapore Pte Ltd

7, Changi South Street 3, Singapore 486348
Phone : +65-6546-8700 Fax : +65-6546-8711
Email : msgproductteam@makita.com.sg
Website : www.makita.com.sg
Facebook : www.facebook.com/MakitaSG



f MakitaSG



VISIT OUR WEBSITE

PRINTED IN SINGAPORE